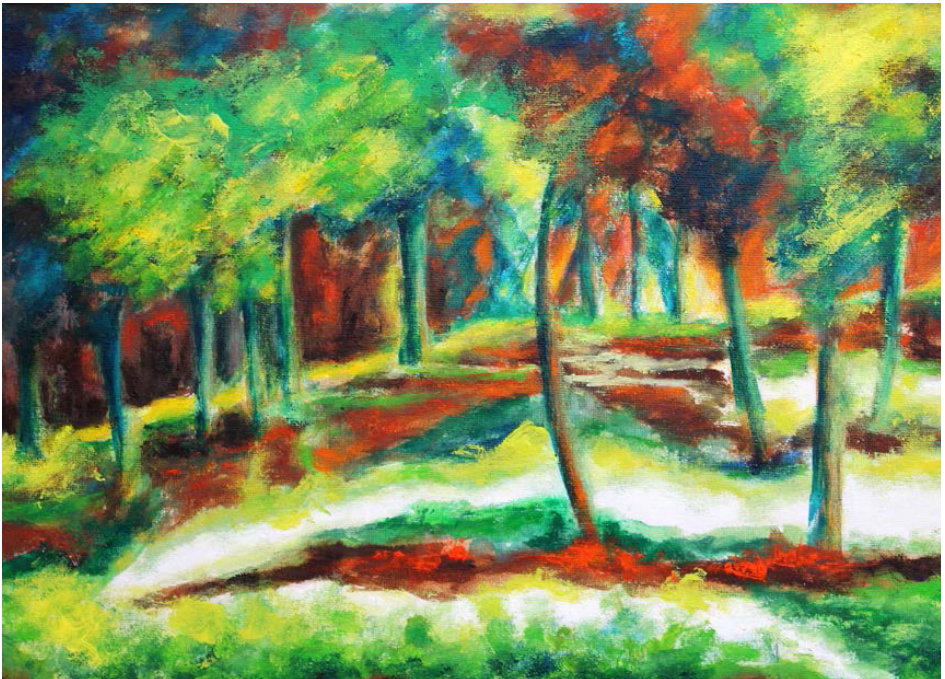


The NHS Continuing Healthcare (CHC) Provision Information



Provision of services if you are entitled
to NHS Continuing Healthcare (CHC)
commissioned by HPFT



If you are eligible for Continuing Healthcare (CHC) awarded by Hertfordshire Partnership NHS Foundation Trust (HPFT), we will work with you to provide appropriate care looking at your assessed level of need.

Care at home

- Care can be commissioned at home to meet your health needs by using care agencies registered in your area.
- The provision of this level of care is dependent on your individual needs and the appropriateness of your home environment.

Care in independent care homes

- It is most likely that you will require care in a care home registered for Nursing Dementia but care can be provided in other suitably registered settings depending on your needs. We will work with you to find the most suitably registered care setting to meet your assessed level of need.

CHC in an NHS setting

- Some Service Users will be assessed as requiring a longer stay bed in one of our NHS units.
- This can be provided until the Service User's needs reach a level where they can be safely maintained in the independent sector, for example Nursing Homes or in their own home.

Ongoing Assessment

- Wherever your care is being provided, ongoing reviews and assessments will be undertaken.
- If you continue to meet the Continuing Healthcare criteria your care package will remain the responsibility of Hertfordshire Partnership University NHS Foundation Trust. If you are assessed as no longer meeting the CHC criteria, we will undertake a full review including a Doctor, Nurse and Social Worker and complete another Decision Support Tool (DST) which will be presented to the Local Clinical Commissioning Group for verification.
- The Clinical Commissioning Group will confirm the outcome to you in writing.
- If you no longer meet the CHC criteria the Local Authority will be informed and they will work with you regarding funding of your ongoing care.
- If your care is being provided in one of HPFT's longer stay units the Social Worker (SW) will work with you to find an alternative placement outside of the hospital setting.
- Please note that the Local Authority will means-test you for your ongoing care when you no longer meet the CHC criteria.

Who to Contact

Contacting the Continuing Healthcare and Discharge Team:

Continuing Healthcare and Discharge Team

Hertfordshire Partnership NHS Foundation Trust
1 Bowlers Green, Kingsley Green,
Harper Lane, Radlett,
Hertfordshire, WD7 9HQ

Telephone: 01923 633488

Further Information

Age UK – For advice and information contact:

Website: www.ageuk.org.uk

Telephone: 0800 678 1602

You can download a fact sheet about Continuing Healthcare:
'FS20'

You can download a fact sheet about Social Care Placements:
'FS29'

Department of Health – For advice and information, visit:
www.gov.uk and search for 'Continuing Healthcare'

Cover Artwork: *Peace Found In The Garden* by Denise Bowser

This piece is part of Hertfordshire Partnership University NHS Foundation Trust
(HPFT) Art Collection www.hpft.nhs.uk/art-project

Hertfordshire Partnership University NHS Foundation Trust
works toward eliminating all forms of discrimination and
promoting equality of opportunity for all.

We are a smoke free Trust therefore smoking is not
permitted anywhere on our premises.

www.hpft.nhs.uk

June 2021